



ENGLISH
EI-5427
For ages 3+

WARNING:
CHOKING HAZARD:
Small parts. Not for
Children under 3 years.



1. Delivery Contents

- DigiBird x 1
- Whistle Ring x 1
- DigiBirds Play Fun House x 1
- See Saw
- 3 x "AG13" for operation
- Swing
- Crown Sticker
- Instruction Manual

The crossed-out dustbin symbol indicates that batteries, rechargeable batteries, button cells, battery packs, etc. must not be put in the household waste. Batteries are harmful to health and the environment. Please help to protect the environment from health risks. If the toy is out of use, please use common household tool to break the product for built-in rechargeable battery operated toy or unscrew the battery door for replaceable battery operated toy, then take the battery out from the toy. Dispose of battery in accordance with your local battery recycling or disposal laws.

Waste Electrical and Electronic Equipment (WEEE)
When this appliance is out of use, please remove all batteries and dispose of them separately. Bring electrical appliances to the local collecting points for waste electrical and electronic equipment. Other components can be disposed of in domestic refuse.

FCC Statements

This device complies with part 15 of the FCC rules. Operation is subject to the following two conditions:
1) This device may not cause harmful interference, and
2) This device must accept any interference received, including interference that may cause undesired operation.
NOTE: This equipment has been tested and found to comply with the limits for a Class B digital device, pursuant to Part 15 of the FCC Rules.

These limits are designed to provide reasonable protection against harmful interference in a residential installation. This equipment generates, uses and can radiate radio frequency energy and, if not installed and used in accordance with the instructions, may cause harmful interference to radio communications. However, there is no guarantee that interference will not occur in a particular installation. If this equipment does cause harmful interference to radio or television reception, which can be determined by turning the equipment off and on, the user is encouraged to try to correct the interference by one or more of the following measures:
- Reorient or relocate the receiving antenna.
- Increase the separation between the equipment and receiver.
- Connect the equipment into an outlet on a circuit different from that to which the receiver is connected.
- Consult the dealer or an experienced radio/TV technician for help.

Safety Precautions:

- Remove battery from the toy when not in use.
Warning: Changes or modifications to this unit not expressly approved by the party responsible for compliance could void the user's authority to operate the equipment.

Cautions:

- Non-rechargeable batteries are not to be recharged.
- Rechargeable batteries are to be removed from the toy before being charged.
- Rechargeable battery are only to be charged by an adult.
- Different types of batteries or new and used batteries are not to be mixed.
- Only batteries of the same or equivalent type as recommended are to be used.
- Batteries are to be inserted with correct polarity.
- Exhausted batteries are to be removed from the toy.
- The supply terminals are not to be short-circuited.
- Do not mix old and new batteries.
- Do not mix alkaline, standard (carbon-zinc) or rechargeable (nickel-cadmium) batteries.

Note:

- Parental guidance is recommended when installing or replacing batteries.
- You are advised to replace the battery as soon as the function becomes impaired.
- Users should keep and retain this information for future reference.
- Users should keep strict accordance with the instruction manual while operation the product.
- Under the environment with electrostatic discharge, the sample may malfunction and require user to reset the sample.

Care and Maintenance:

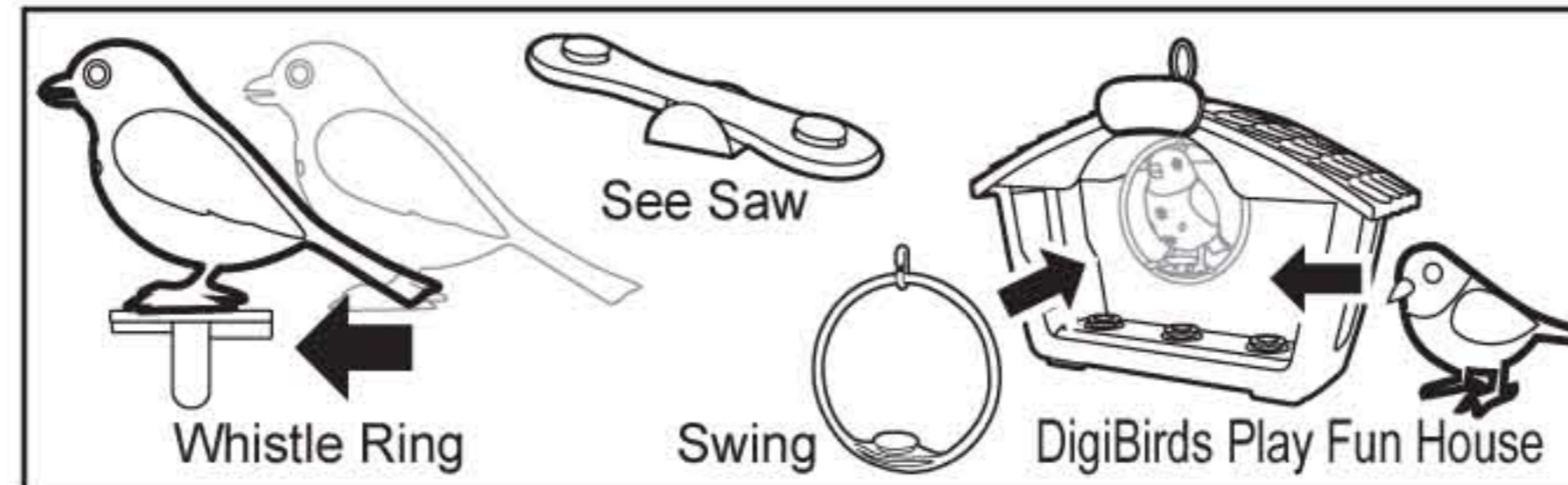
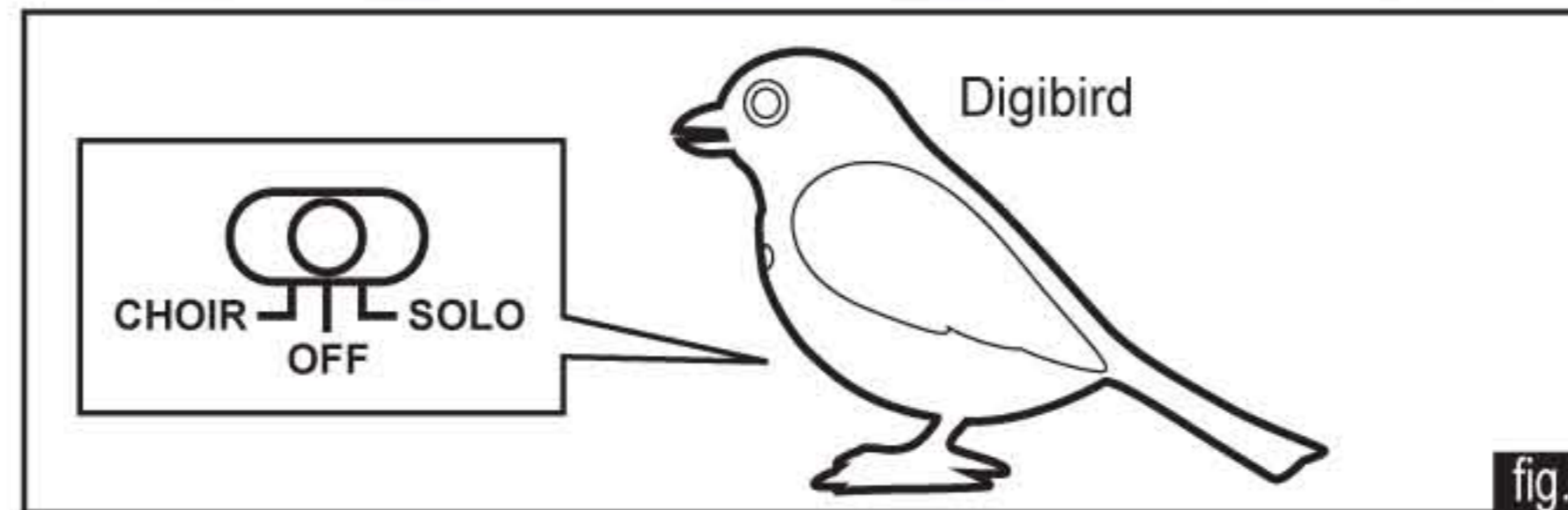
- Always remove batteries from the toy when it is not being used for a long period of time.
- Wipe the toy gently with a clean damp cloth.
- Keep the toy away from direct sunlight and/or direct heat.
- Do not submerge the toy into water that can damage the electronic assemblies.

Battery requirement (DigiBirds):

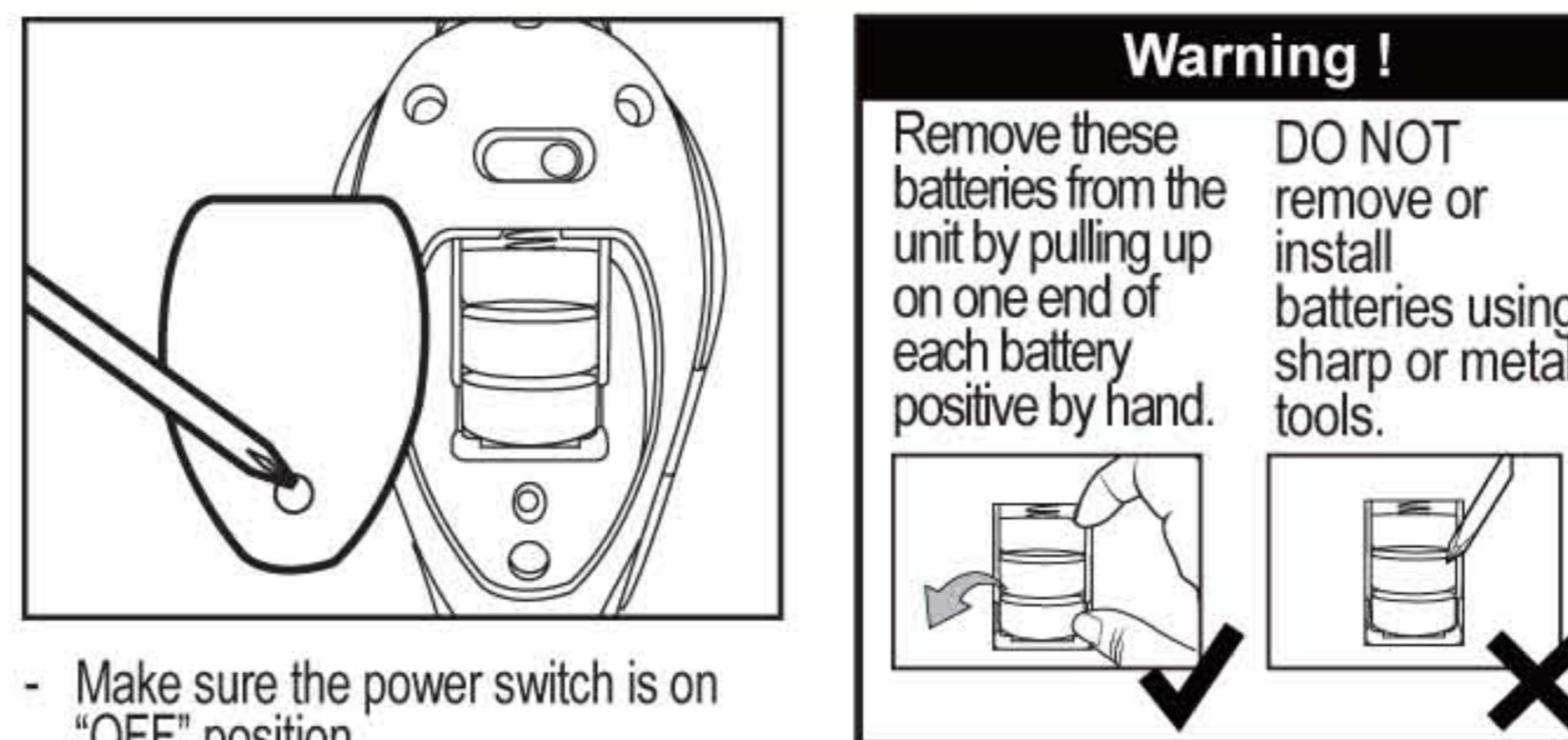
- Power Supply :
- Rating : DC 4,5 V / 0,675W
- Batteries : 3 x 1,5 V "AG13"/LR44 (included)

Silverlit® Silverlit SAS, Espace Green Parc, Route de Villepele, 91280 Saint Pierre du Perray / France.
©2014 Silverlit. All rights reserved.

2. Part Identification



3. Battery Installation



- Make sure the power switch is on "OFF" position.
- Use a screwdriver to loosen screw on the battery compartment in anti-clockwise.
- Put 3 x "AG13" battery in the battery compartment as per the polarity shown inside and tighten the screw in clockwise.

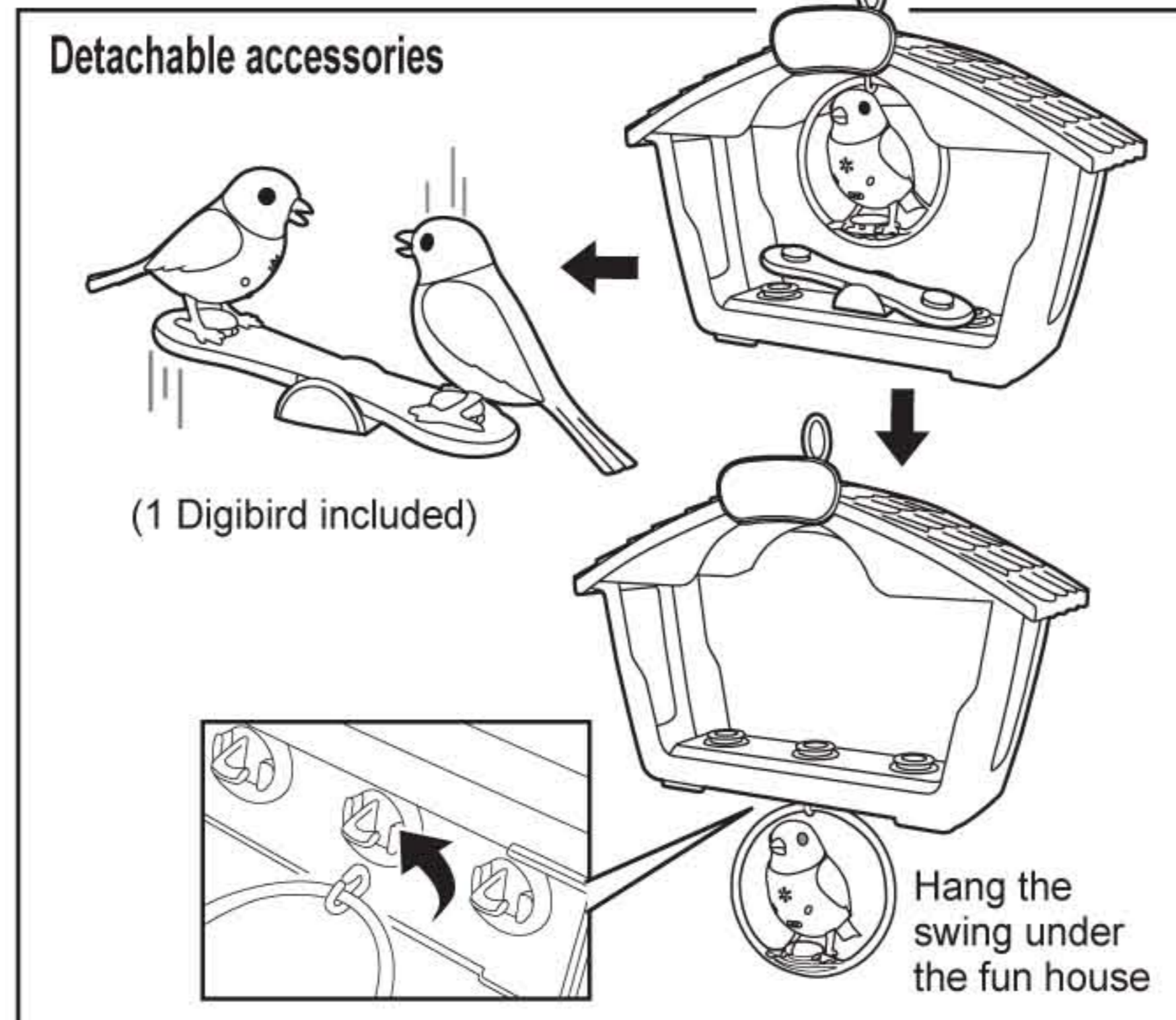
4. General Feature

4.1 Activate DigiBird to TWEET through blowing to the DigiBird around 3 seconds. Activate DigiBird to SING SONGS through whistle rings by blowing it for 3 seconds.

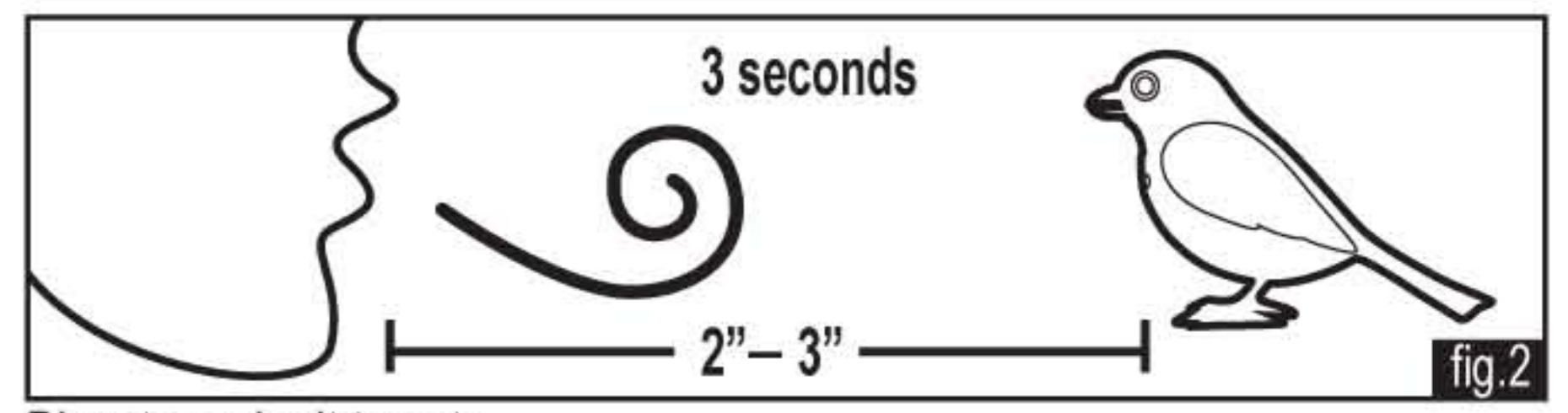
4.2 DigiBird can turn head and move beak according to the rhythm.

5. Start to Play

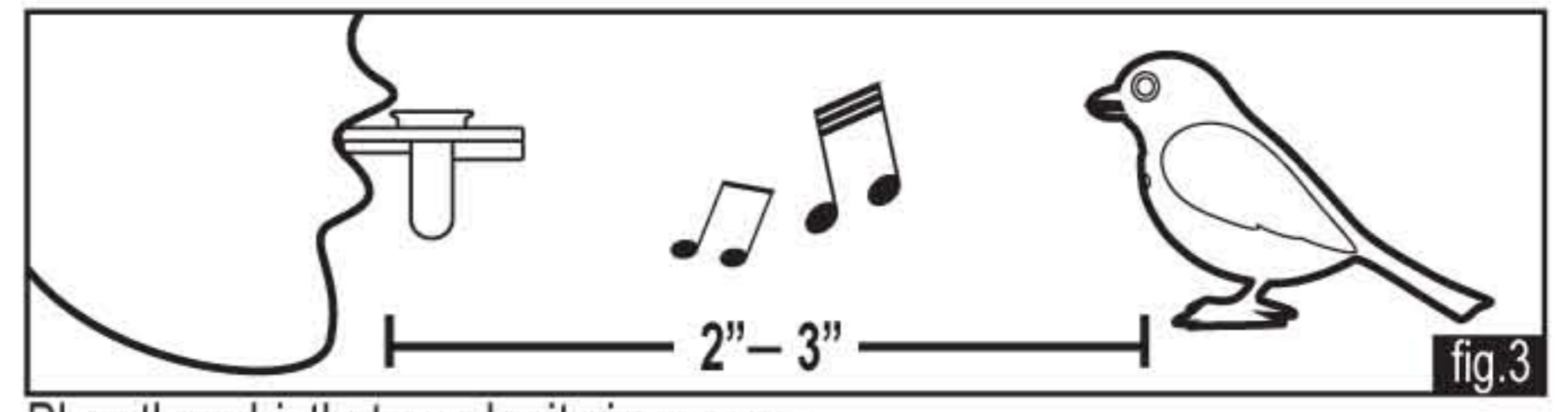
DigiBird has two play modes and select either one mode by slide switch under DigiBird's chest before you start to play (fig. 1).



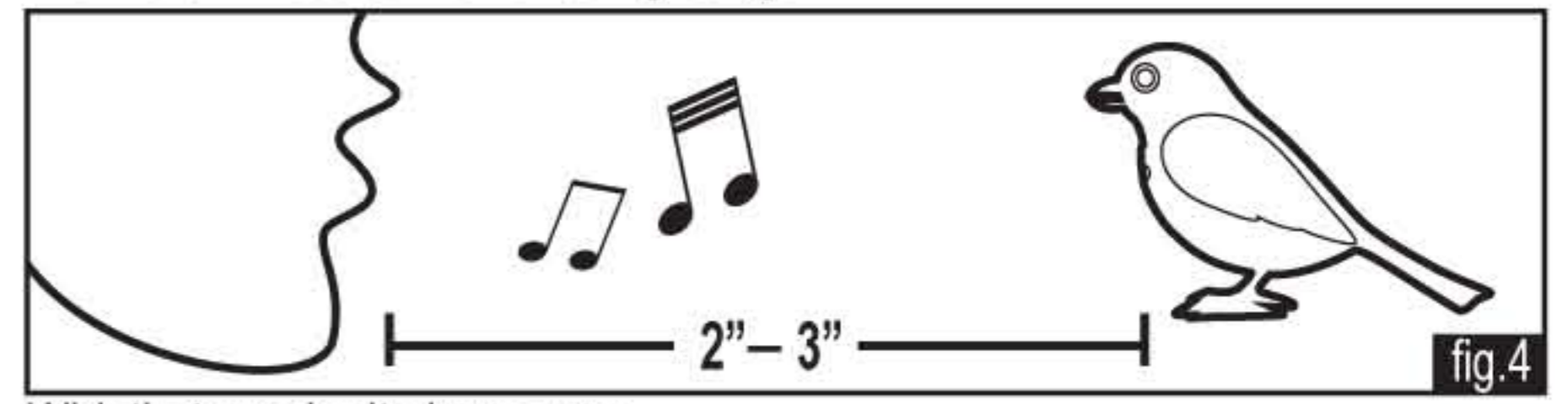
5.1 Solo mode
In SOLO MODE, DigiBird will tweet when you blow to its chest or sing a song when you whistle. (fig. 2 - fig. 4)



Blow to make it tweets.



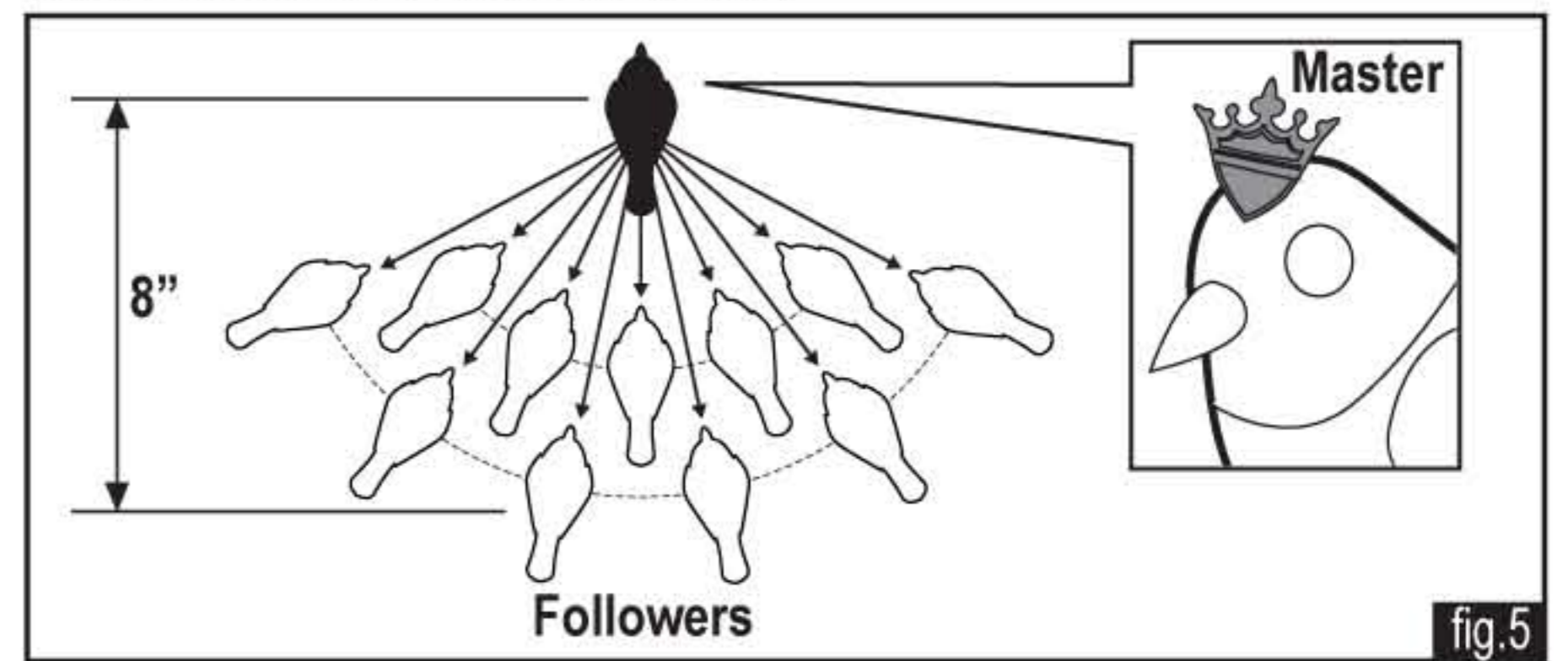
Blow the whistle to make it sing songs.



Whistle to make it sing songs.

5.2 Choir mode

You can do the pairing to line up more than one bird to tweet and sing together. You can put the sticker on the leader of the choir. (fig. 5) To pair, turn the switch of the first DigiBird to CHOIR mode first, you will hear a MAGIC TUNE. DigiBird will then turn the head few times to confirm itself as a MASTER. Then, place the second DigiBird next to the MASTER, turn the switch of the second DigiBird to CHOIR mode, you will hear again a MAGIC TUNE after they have successfully paired, the second DigiBird will then move its beak few times to confirm itself as a FOLLOWER. When you blow or whistle to the MASTER DigiBird to sing, the FOLLOWER(s) will follow the same actions. The more DigiBird you paired, the bigger the choir team becomes. You can pair no limited number of birds at one time.



6. Tips and Hints

- 6.1 For DigiBird to listen to each other clearly, always place your DigiBird within 8" distance or closer.
- 6.2 In DigiBird pairing, it is limited to turn on 1 DigiBird only each time.
- 6.3 The FOLLOWER DigiBird may sometimes miss the command from MASTER DigiBird or false to trigger the song due to external interference, DigiBird will catch up in the next song.
- 6.4 Power save sleep mode.
To save the battery power, the bird will go to sleep mode automatically without whistle triggering. To turn on again, simply slide the switch to OFF and ON again under the bird chest.
- 6.5 Low battery detection.
If the battery power is low while you are playing or turning switching on the bird, there will be a bird's alert sound to remind you to change the battery.

7. Play Through Apps

You can go to the www.digibirds.com to download the APPS and play to discover more hidden songs from the birds.

DigiBirds™
DIGIBIRDS.COM

SCAN FOR
SECRET FUN!

